

KLERADERM



beauty

n. 1/2009

STRECH MARKS
THE CAUSES
COSMETIC'S ACTION
SPECIAL FORMULAS

TONE UP
WITH AWAKENING OF
NATURE MASSAGE

NO GRAVITY
BREAST PROGRAM

DAILY
TREATMENTS

**TONIC
BREAST**



SEDUCTIVE IF TONIC AND FIRM, THE BREAST HAS A FRAGILE BEAUTY.

The breast is one of the most delicate and important zones of the female body. Since the puberty, it is subject to numerous and inevitable transformations: development, increase or loss of weight, pregnancy, nursing and menopause, all factors able to modify deeply its form and health. Not to underestimate, is also the constant strength of gravity's action, the phenomena of dehydration and ageing, loss of elasticity and tone, which breast is naturally submitted. It is really in own structure of the breast the cause of its vulnerability: in fact this is rich of glands and adipose cells, and it doesn't possess of an own musculature, but it leans on the big pettoral muscle to which is settled

through the suspensory ligaments. The skin that dresses it, with its own health and comfort, it is important and the only mean of containment and support of the breast.

THE CAUSES

The factors that determine the breast's relaxation, emptying and the appearance of stretch marks are : pregnancy, nursing, drastic oscillations of weight and hormonal disorders. Instead the décolleté's area is one of the zones more exposed against the photo exposure and the consequent cutaneous degeneration it is precociously underlined with the appearance of stains, cheratosis and dehydration phenomenon.

For this reason the Beauty Salons make treatments available complete that foresee specific invigorating manouvres like those of the massage Kleraderm AWAKENING OF NATURE and specific tone up and elasticizing products.

Breast TONIC

Sustained by a particularly thin skin, needs constant attentions to sustain and maintenance its turgid and well modelled aspect.

SPECIAL FORMULAS

No Gravity Breast Program thanks to active principles and exclusive natural origin ingredients it is able to return turgidity and compactness to the breast's and décolleté fabrics, opposing the strength of gravity action responsible of the tone loss of this delicate part. The No Gravity Breast Serum and the No Gravity Breast Emulsion develops the followings actions:

HYDRATE AND NOURISH IN DEPTH.

All thanks to appreciated and selected vegetable Oils as Rosa's Mosqueta Oil, Baubab and Olive Oil and other active principles as: Collagene, Elastina and Hyluronic Acid that guarantees new support and a renewed aspect. The formulas of Rassoderm No Gravity Breast has enriched with Linefactor, active

exclusive, that promotes the regeneration of the epidermis improving the density of the skin that visibly appears smoothed and elastic. Besides Ceramidi and Lift Agents preventing the relaxation of fiber and visibly improve the stretch marks disappearance.

PROFESSIONAL TREATMENT

The duration treatment varying from 50 minutes to a hour to perform for a cycle of 9/12 treatments, with two sessions the first week and the others to be taken place with weekly lift.

PREPARATION AND CLEANING

COLLAGEN CLEANSING MILK

Cleanse gently décolleté and breast massaging with circular movements.

EPIDERM GOMMAGE

With delicacy perform a delicate exfoliating gommage to prepare the skin to the intensive phase.

INTENSIVE PHASE

RASSODERM PYGEUM AFRICANUM PHIALES

apply the content of a phial and to massage up to complete absorption

NO GRAVITY BREAST EMULSION

apply and to massage for 15-20 minutes, cover the breast with a towel dampened in cold water for about 3-5 minutes.

LIFT LONG LASTING ACTION

NO GRAVITY BREAST SERUM

Concentrated serum immediate lift effect to apply until complete absorption in the breast's cup.

AT HOME

The correct moment to apply cosmetic is after an accurate cleaning, when the skin is more receptive.

Breast's products are proposed as emulsion and serum, alone or combined, thanks to the elevated content of active principles they develop an effective action of bump against the beauty flow of this fragile area.

The cosmetic must be used with double application morning and evening

Manoeuvres of auto-massage to better penetrate the active principles and to stimulate the skin of the breast are the following:

- With the opposite hand to the breast to be treated, depart from the joining the lower part above the ribs to go up again along the breasts and terminar in the zone under ascellare.
- From the joining of the armpit, to full hand, to go up again along the natural suspender that supports the breast arriving behind the shoulder.
- Place open hands on the breasts and to throw then slightly toward the shoulders true the outside.
- Repeat it for 3 times.
- Tender the basin palm, to perform to read ascending pressures on every breast from the outside toward the inside.

MORE THAN EVERY OTHER
PART OF THE BODY THE
BREAST IS SENSITIVE TO THE
SEASONS OF THE LIFE, FROM
THE ADOLESCENCE TO THE
MENOPAUSE, IT CHANGES
IN THE TIME CONSISTENCE,
VOLUME AND FORM.
IT IS THE SYMBOL
OF THE FEMALE
EVOLUTION.

TO MAKE EVERY DAY

CLEANING

1

Ideal clean areas with **Collagene Cleansing Milk**, delicate and deprived of tensioactive ingredients. Subsequently dump with **Collagen Tonic Lotion** or a refreshing with aromatic water.

DELICATE GOMMAGE

2

Smooth the cutaneous surface with a delicate exfoliation, eliminating the devitalized cells.

* Once to week.

HYDRATION

3

Hydrate and nourish to guarantee the correct rate of hydration to the skin giving fabrics's turgidity and softness.

COLD SHOWER

4

Cold water is a real circulatory gymnastics that invigorates the fabrics instantly giving a more turgid aspect. Sometimes with possible can be granted an Invigorating Aromatic Bath (**Coralys Aromatic Bath**). You can also conclude the shower with some throw of cold water, addressing it for some second on the breast (as to draw an eight). Effective also dumping with towels soaked in cold water, is possible add **Elasticizing or Toning Synergy**. NB: Showers and frozen dumping are to avoid in the days of the menstrual cycle because the breast is too tense and aching.

ELASTICIZING

5

Pregnancy and drastic modifications of the bodily weight are among the principal causes of breast's tone loss. The relaxation in fact is due to the alteration of the elastic fibers and the weakening of the fabrics. During this process there are two factors: the hypersensitivity of the fabrics submitted for different months to the structural expansion and from the other the increase of particular hormones secreted by the adrenal glands that are increased in pregnancy. To prevent tone loss and relaxation, besides the use of cosmetic that also preserves hydration and elasticity tissue a daily gymnastics pettoral to strengthen the muscles help to increases the trophism of fibers.

PREVENTION

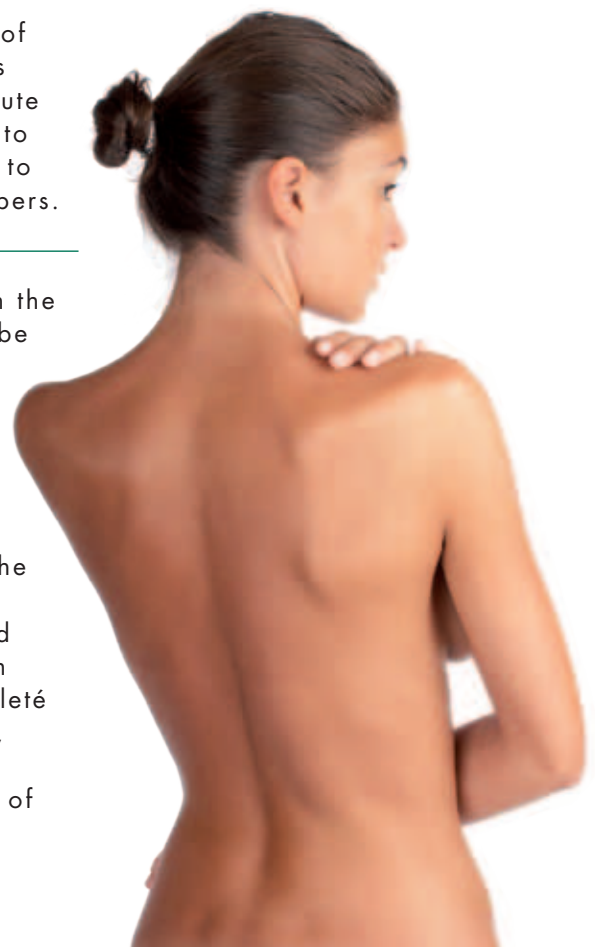
6

For every woman the prevention must be synonymous of promotion of her own comfort, of his/her own health, but also of his/her own beauty. To avoid the exposure of the breast to the sun or to the tanning lamps. To always apply an elevated factor of solar protection on the breast and on the décolleté to prevent: the photo-aging, the dehydration, the loss of elasticity and the formation of the sunspots. To apply abundant products later-sun lenitive.

MEDICAL TEST

7

Important prevention with periodic mammographic visits that monitoring the stat and the health of the gland. Any feeling of change of the normal aspect of the breast or the appearance the a small nodule must induce to ask for a control from expert.





INTENSIVE TREATMENT NO GRAVITY

3 ACTIONS:

REMODELS + 54%
TONE EFFECT +74%
ROUNDER BREAST +12%




KLERADERM®



KLERADERM®

NO GRAVITY BREAST PROGRAM

From Kleraderm laboratories NO GRAVITY BREAST PROGRAM. Improve the breast volume thanks to intensive lift action of XANTAN CROSSPOLYMER. RESULTS: the breast appears visibly up and modeled without surgery.



For any information consult web site:
www.kleraderm.com